



# STEAM SAUNA

## SERIES



SAuna WORLD



[sawo.com](http://sawo.com)



SAWO Sauna



Sawo Inc.

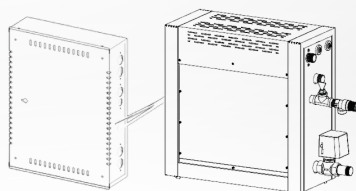


# STN-S

## Steam Generator

Built for power and performance, the **STN-S** steam generator features more flexible installation options. It has a separate electronics compartment, meaning that the generator can be installed in a different location than the electronics. Its cassette-style heating elements simplify cleaning and maintenance of the tank, while aroma, fan, and dimmer controls let you customize every steam session.

Extra steam is just a button away with the demand button feature that can be installed inside or outside of the steam room. Error codes appear on the control for quick troubleshooting. Up to five units can be linked for a maximum of 75,0kW output, all managed from a single SAWO control



# STN-S Overview



## 2 Heating Elements

- » Power range: 3,0 – 5,0kW
- » Steam output: up to 6,7kg/hr
- » Piping and electrical cables can be installed in either side
- » Own pipe for overpressure valve
- » Auto drain
- » Steam head included
- » Cassette type heating element setup for easy maintenance
- » ¾" steam pipe
- » Stainless steel touch
- » Available controls: STP 2.0 user interface



## 3 Heating Elements

- » Power range: 4,5 – 7,5kW
- » Steam output: up to 7,5kg/hr
- » Piping and electrical cables can be installed in either side
- » Own pipe for overpressure valve
- » Auto drain
- » Steam head included
- » Cassette type heating element setup for easy maintenance
- » ¾" steam pipe
- » Stainless steel touch
- » Available controls: STP 2.0 user interface



## 6 Heating Elements

- » Power range: 9,0 – 15,0kW
- » Steam output: up to 20kg/hr
- » Piping and electrical cables can be installed in either side
- » Own pipe for overpressure valve
- » Auto drain
- » 2 Steam heads included
- » Cassette type heating element setup for easy maintenance
- » ¾" steam pipe
- » Stainless steel touch
- » Available controls: STP 2.0 user interface

# Technical Data

## 2 Heating Elements

STEAM GENERATOR MODEL	kW	STEAM ROOM		SIZE OF STEAM GENERATOR			WEIGHT (kg)	CONTROL
		MIN	MAX	LENGTH	WIDTH	HEIGHT		
STN-S-30-1/2	3,0		3	185	485	560	17	Stainless Touch   STN-S 2.0
STN-S-35-1/2	3,5		3,5	185	485	560	17	Stainless Touch   STN-S 2.0
STN-S-40-1/2	4,0		4	185	485	560	17	Stainless Touch   STN-S 2.0
STN-S-45-1/2	4,5	2	5	185	485	560	17	Stainless Touch   STN-S 2.0
STN-S-50-1/2	5,0	2	6	185	485	560	17	Stainless Touch   STN-S 2.0

## 3 Heating Elements

STEAM GENERATOR MODEL	kW	STEAM ROOM		SIZE OF STEAM GENERATOR			WEIGHT (kg)	CONTROL
		MIN	MAX	LENGTH	WIDTH	HEIGHT		
STN-S-45-3	4,5	2	5	220	485	560	19	Stainless Touch   STN-S 2.0
STN-S-60-3	6,0	3	10	220	485	560	19	Stainless Touch   STN-S 2.0
STN-S-60-C1/3	6,0	3	10	220	485	560	19	Stainless Touch   STN-S 2.0
STN-S-75-3	7,5	4	15	220	485	560	19	Stainless Touch   STN-S 2.0
STN-S-75-C1/3	7,5	4	15	220	485	560	19	Stainless Touch   STN-S 2.0

## 6 Heating Elements

STEAM GENERATOR MODEL	kW	STEAM ROOM		SIZE OF STEAM GENERATOR			WEIGHT (kg)	CONTROL
		MIN	MAX	LENGTH	WIDTH	HEIGHT		
STN-S-90-3	9,0	8	20	310	485	560	23	Stainless Touch   STN-S 2.0
STN-S-90-C1/3	9,0	8	20	310	485	560	23	Stainless Touch   STN-S 2.0
STN-S-120-3	12,0	15	28	310	485	560	23	Stainless Touch   STN-S 2.0
STN-S-150-3	15,0	22	40	310	485	560	23	Stainless Touch   STN-S 2.0





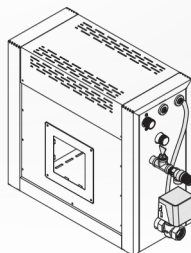
# STN-W

## Steam Generator

A heavy-duty performer built for commercial use, the **STN-W** steam generator features a cassette for heating elements that makes cleaning or replacement quick and simple. The generator's aroma, fan, and dimmer controls allow users to fully customize the sauna experience, while an optional demand button delivers an extra burst of steam on command.

Maintenance and installation are straightforward: error codes are shown on the controller screen, and a removable side window provides easy access to the settings board.

The steam outlet can be installed left or right, with the autodrain positioned on the side or bottom. Up to five units can be linked together for a maximum 75,0kW output, all controlled using a single SAWO interface.



# STN-W Overview



## 2 Heating Elements

- » Power range: 3,0 – 5,0kW
- » Steam output: up to 6,7kg/hr
- » Own pipe for overpressure valve
- » Auto drain
- » Steam head included
- » Cassette type heating element setup for easy maintenance
- » ¾" steam pipe
- » Stainless steel touch
- » Available controls: STP 2.0 user interface

## 3 Heating Elements

- » Power range: 4,5 – 7,5kW
- » Steam output: up to 7,5kg/hr
- » Own pipe for overpressure valve
- » Auto drain
- » Steam head included
- » Cassette type heating element setup for easy maintenance
- » ¾" steam pipe
- » Stainless steel touch
- » Available controls: STP 2.0 user interface

## 6 Heating Elements

- » Power range: 9,0 – 15,0kW
- » Steam output: up to 20kg/hr
- » Own pipe for overpressure valve
- » Auto drain
- » 2 Steam heads included
- » Cassette type heating element setup for easy maintenance
- » ¾" steam pipe
- » Stainless steel touch
- » Available controls: STP 2.0 user interface

# Technical Data

## 2 Heating Elements

STEAM GENERATOR MODEL	kW	STEAM ROOM		SIZE OF STEAM GENERATOR			WEIGHT (kg)	CONTROL
		MIN	MAX	LENGTH	WIDTH	HEIGHT		
STN-W-30-1/2	3,0		3	245	485	560	17	Stainless Touch   STN-W 2.0
STN-W-35-1/2	3,5		3,5	245	485	560	17	Stainless Touch   STN-W 2.0
STN-W-40-1/2	4,0		4 5	245	485	560	17	Stainless Touch   STN-W 2.0
STN-W-45-1/2	4,5	2	6	245	485	560	17	Stainless Touch   STN-W 2.0
STN-W-50-1/2	5,0	2		245	485	560	17	Stainless Touch   STN-W 2.0

## 3 Heating Elements

STEAM GENERATOR MODEL	kW	STEAM ROOM		SIZE OF STEAM GENERATOR			WEIGHT (kg)	CONTROL
		MIN	MAX	LENGTH	WIDTH	HEIGHT		
STN-W-45-3	4,5	2	5	280	485	560	19	Stainless Touch   STN-W 2.0
STN-W-45-C1/3	4,5	2	5	280	485	560	19	Stainless Touch   STN-W 2.0
STN-W-60-3	6,0	3	10	280	485	560	19	Stainless Touch   STN-W 2.0
STN-W-60-C1/3	6,0	3	10	280	485	560	19	Stainless Touch   STN-W 2.0
STN-W-75-3	7,5	4	15	280	485	560	19	Stainless Touch   STN-W 2.0
STN-W-75-C1/3	7,5	4	15	280	485	560	19	Stainless Touch   STN-W 2.0

## 6 Heating Elements

STEAM GENERATOR MODEL	kW	STEAM ROOM		SIZE OF STEAM GENERATOR			WEIGHT (kg)	CONTROL
		MIN	MAX	WIDTH	DEPTH	HEIGHT		
STN-W-90-3	9,0	8	20	560	375	485	23	Stainless Touch   STN-W 2.0
STN-W-90-C1/3	9,0	8	20	560	375	485	23	Stainless Touch   STN-W 2.0
STN-W-120-3	12,0	15	28	560	375	485	23	Stainless Touch   STN-W 2.0
STN-W-150-3	15,0	22	40	560	375	485	23	Stainless Touch   STN-W 2.0

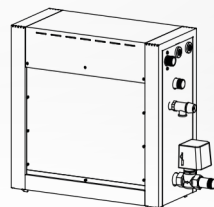


# STN

## Steam Generator

Built for the demands of commercial use, the **STN** steam generator combines durability and performance. Its solid stainless-steel construction minimizes corrosion, while a range of optional features, including aroma, fan, and dimmer controls, allow for a personalized steam experience. An optional demand button releases extra steam for 30 seconds when needed.

Troubleshooting is effortless, with error codes displayed directly on the controller screen. The system can be installed in either left or right orientation and linked in series with up to five units for a maximum output of 75,0kW, all controlled through a single SAWO interface.



# STN Overview



## 2 Heating Elements

- » Power range: 3,0 – 5,0kW
- » Steam output: up to 6,7kg/hr
- » Can be installed in either side
- » Own pipe for overpressure valve
- » Auto drain
- » Steam head included
- » Cassette type heating element setup for easy maintenance
- » ¾" steam pipe
- » Available controls: STP Classic, STP Classic 2.0 and STP Stainless Steel Touch



## 3 Heating Elements

- » Power range: 4,5 – 7,5kW
- » Steam output: up to 7,5kg/hr
- » Can be installed in either side
- » Own pipe for overpressure valve
- » Auto drain
- » Steam head included
- » Cassette type heating element setup for easy maintenance
- » ¾" steam pipe
- » Available controls: STP Classic, STP Classic 2.0 and STP Stainless Steel Touch



## 6 Heating Elements

- » Power range: 9,0 – 15,0kW
- » Steam output: up to 20kg/hr
- » Can be installed in either side
- » Own pipe for overpressure valve
- » Auto drain
- » 2 Steam heads included
- » Cassette type heating element setup for easy maintenance
- » ¾" steam pipe
- » Available controls: STP Classic, STP Classic 2.0 and STP Stainless Steel Touch

## Technical Data

### 2 Heating Elements

STEAM GENERATOR MODEL	kW	STEAM ROOM		SIZE OF HEATER			WEIGHT (kg)	CONTROL
		MIN (m³)	MAX	LENGTH	WIDTH	HEIGHT		
STN-301/2	3,0		3	185	485	560	17	Touch   Classic   Classic 2.0
STN-35-1/2	3,5		3,5	185	485	560	17	Touch   Classic   Classic 2.0
STN-40-1/2	4,0		4	185	485	560	17	Touch   Classic   Classic 2.0
STN-45-1/2	4,5	2	5	185	485	560	17	Touch   Classic   Classic 2.0
STN-50-1/2	5,0	2	6	185	485	560	17	Touch   Classic   Classic 2.0

### 3 Heating Elements

STEAM GENERATOR MODEL	kW	STEAM ROOM		SIZE OF HEATER			WEIGHT (kg)	CONTROL
		MIN (m³)	MAX	LENGTH	WIDTH	HEIGHT		
STN-45-3	4,5	2	5	220	485	560	19	Touch   Classic   Classic 2.0
STN-45-C1/3	4,5	2	5	220	485	560	19	Touch   Classic   Classic 2.0
STN-60-3	6,0	3	10	220	485	560	19	Touch   Classic   Classic 2.0
STN-60-C1/3	6,0	3	10	220	485	560	19	Touch   Classic   Classic 2.0
STN-75-3	7,5	4	15	220	485	560	19	Touch   Classic   Classic 2.0
STN-75-C1/3	7,5	4	15	220	485	560	19	Touch   Classic   Classic 2.0

### 6 Heating Elements

STEAM GENERATOR MODEL	kW	STEAM ROOM		SIZE OF HEATER			WEIGHT (kg)	CONTROL
		MIN (m³)	MAX	LENGTH	WIDTH	HEIGHT		
STN-90-3	9,0	8	20	310	485	560	23	Touch   Classic   Classic 2.0
STN-90-C1/3	9,0	8	20	310	485	560	23	Touch   Classic   Classic 2.0
STN-120-3	12,0	15	28	310	485	560	23	Touch   Classic   Classic 2.0
STN-150-3	15,0	22	40	310	485	560	23	Touch   Classic   Classic 2.0



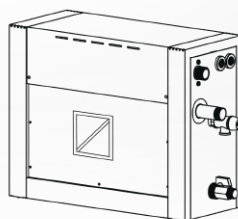


# STE-W

## Steam Generator

**STW-E** Steam generators are best for residential use. It has straight forward functions that is very easy to operate by switching on the control and adjusting the temperature knob. Now the updated design with removable side window for easier changing of settings on the board.

It can be installed that the steam outlet be facing left or right at any convenient position. SAWO steam generators can be tapped up to 5 series connections to have maximum power output using only 1 control. Maximum power output is 75kW.





# STE-W Overview



## 2 Heating Elements

- » Steam output up to 6,7kg/hr
- » Can be installed in either side
- » Own pipe for overpressure valve
- » Steam head included
- » 3kW - 5kW power



## 3 Heating Elements

- » Steam output up to 7,5kg/hr
- » Can be installed in either side
- » Own pipe for overpressure valve
- » Steam head included
- » 4,5kW - 7,5kW power



## 6 Heating Elements

- » Steam output up to 20kg/hr
- » Can be installed in either side
- » Own pipe for overpressure valve
- » Steam head included
- » 9kW - 15kW power

# Technical Data

## 2 Heating Elements

STEAM GENERATOR MODEL	kW	STEAM ROOM		SIZE OF HEATER			WEIGHT (KG)	CONTROL
		MIN	MAX	LENGTH	WIDTH	HEIGHT		
STE-W-30-1/2	3,0		3	555	275	465	16,5	STW-E 2.0
STE-W-35-1/2	3,5		3,5	555	275	465	16,5	STW-E 2.0
STE-W-40-1/2	4,0		4	555	275	465	16,5	STW-E 2.0
STE-W-45-1/2	4,5	2	5	555	275	465	16,5	STW-E 2.0
STE-W-50-1/2	5,0	2	6	555	275	465	16,5	STW-E 2.0

## 3 Heating Elements

STEAM GENERATOR MODEL	kW	STEAM ROOM		SIZE OF HEATER			WEIGHT (KG)	CONTROL
		MIN	MAX	LENGTH	WIDTH	HEIGHT		
STE-W-45-C1/3	4,5	2	5	555	320	370	18	STW-E 2.0
STE-W-60-C1/3	6,0	3	10	555	320	370	18	STW-E 2.0
STE-W-75-C1/3	7,5	4	15	555	320	370	18	STW-E 2.0

## 6 Heating Elements

STEAM GENERATOR MODEL	kW	STEAM ROOM		SIZE OF HEATER			WEIGHT (KG)	CONTROL
		MIN	MAX	LENGTH	WIDTH	HEIGHT		
STE-W-C1/3	9,0	8	20	555	405	465	23	STW-E 2.0
STE-W-120-3	12,0	15	28	555	405	465	23	STW-E 2.0
STE-W-150-3	15,0	22	40	555	405	465	23	STW-E 2.0

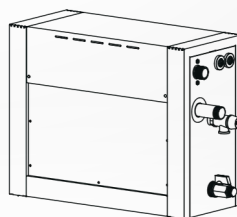


# STE

## Steam Generator

Reliable and effortless to use, the **STE** steam generator is designed for residential environments. It is also simple to operate; just switch on the control and adjust the temperature knob. The stainless-steel construction ensures long-lasting durability and resistance to corrosion.

The **STE** can be oriented for connections on either side for easy installation in any layout. For greater power capacity, up to five units can be linked in series to deliver a maximum output of 75,0kW, all managed from a single SAWO control.



# STE Overview



## 2 Heating Elements

- » Power range: 3,0 - 5,0kW
- » Steam output: up to 6,7kg/hr
- » Can be installed in either side
- » Own pipe for overpressure valve
- » Steam head included
- » Available controls: STE 2.0



## 3 Heating Elements

- » Power range: 4,5 - 7,5kW
- » Steam output: up to 7,5kg/hr
- » Can be installed in either side
- » Own pipe for overpressure valve
- » Steam head included
- » Available controls: STE 2.0



## 6 Heating Elements

- » Power range: 9,0 - 15,0kW
- » Steam output: up to 20kg/hr
- » Can be installed in either side
- » Own pipe for overpressure valve
- » 2 Steam heads included
- » Available controls: STE 2.0

# Technical Data

## 2 Heating Elements

STEAM GENERATOR MODEL	kW	STEAM ROOM		SIZE OF HEATER			WEIGHT (KG)	CONTROL
		MIN	MAX	LENGTH	WIDTH	HEIGHT		
STE-30-1/2	3,0		3	205	465	555	16,5	STE Basic   Advance
STE-35-1/2	3,5		3,5	205	465	555	16,5	STE Basic   Advance
STE-40-1/2	4,0		4	205	465	555	16,5	STE Basic   Advance
STE-45-1/2	4,5	2	5	205	465	555	16,5	STE Basic   Advance
STE-50-1/2	5,0	2	6	205	465	555	16,5	STE Basic   Advance

## 3 Heating Elements

STEAM GENERATOR MODEL	kW	STEAM ROOM		SIZE OF HEATER			WEIGHT (KG)	CONTROL
		MIN	MAX	LENGTH	WIDTH	HEIGHT		
STE-45-C1/3	4,5	2	5	205	370	555	18	STE Basic   Advance
STE-60-C1/3	6,0	3	10	205	370	555	18	STE Basic   Advance
STE-75-C1/3	7,5	4	15	205	370	555	18	STE Basic   Advance

## 6 Heating Elements

STEAM GENERATOR MODEL	kW	STEAM ROOM		SIZE OF HEATER			WEIGHT (KG)	CONTROL
		MIN	MAX	LENGTH	WIDTH	HEIGHT		
STE-90-C1/3	9,0	8	20	335	465	555	23	STE Basic   Advance
STE-120-3	12,0	15	28	335	465	555	23	STE Basic   Advance
STE-150-3	15,0	22	40	335	465	555	23	STE Basic   Advance



# STEAM GENERATOR CONTROLS



Steam 2.0  
(STP-INFACE-V2)

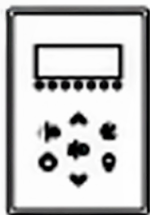


Steam Stainless Steel Touch  
(STP-INFACE-SST)

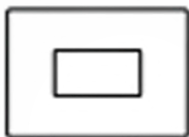


Steam STE  
(STE-INFACE-V2)





- » Thick stainless steel casing
- » LED digital display
- » Scent pump, light dimmer and fan
- » 7,5 meters RJ12 cable with connectors included

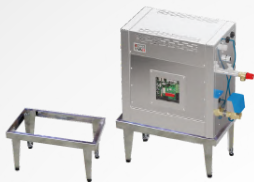


- » Thick stainless steel casing
- » Animated buttons
- » Compatible for automated household component
- » Emergency alarm provision
- » Standby mode to keep water warm until next session
- » Displays error code
- » Autodrain function
- » Key lock
- » Easy mode available
- » Date and time setup
- » Kilowatt usage counter
- » Decalcifying function
- » Thick stainless steel casing
- » Animated buttons
- » Compatible for automated household component
- » Emergency alarm provision
- » Standby mode to keep water warm until next session
- » Displays error code
- » Autodrain function
- » Key lock
- » Easy mode available
- » Date and time setup
- » Kilowatt usage counter
- » Decalcifying function



- » Thick stainless steel casing
- » LED digital display
- » 7,5 meters RJ12 cable with connectors included

# Optional Items



## Installation Stand for STN-W

code: STW-STAND

» For easier installation of STN-W  
steam generator



## Steam Door

code: ST-746-L | R | I  
size: 790 x 1890mm



## Steam Door

code: ST-749-L | R | I  
size: 900 x 2100mm



## Aroma Cup

code: STS-PUMP



## Steam Head

code: STP-SHEAD

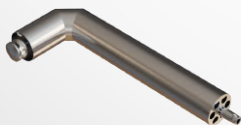


## Protective Cover STP-SHEAD

code: STP-COV  
size: 88 x 75 x 65mm

## Venturi Pipes

- » Generate milder and softer steam
- » Create more steam clouds
- » Prevents hissing noise
- » Including steam head to spread the steam outburst
- » Thick stainless steel metal



## Venturi Pipe L-shape

code: ST-LPIPE

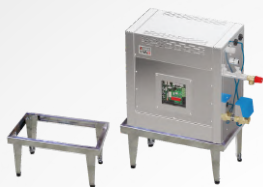


## Venturi Pipe Straight

code: ST-PIPE



# Optional Items



## Installation Stand for STN-W

code: STW-STAND

» For easier installation of STN-W  
steam generator



## Aroma Cup

code: STS-PUMP



## Steam Door

code: ST-746-L | R | I  
size: 790 x 1890mm



## Steam Door

code: ST-749-L | R | I  
size: 900 x 2100mm

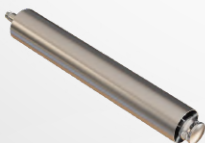
## Venturi Pipes

- » Generate milder and softer steam
- » Create more steam clouds
- » Prevents hissing noise
- » Including steam head to spread the steam outburst
- » Thick stainless steel metal



## Venturi Pipe L-shape

code: ST-LPIPE



## Venturi Pipe Straight

code: ST-PIPE





SAuna WORLD



[sawo.com](http://sawo.com)



SAWO Sauna



Sawo Inc.