



FLOOR

HEATER SERIES



SAuna WORLD



sawo.com



SAWO Sauna



Sawo Inc.



Nordex Pro

The newest addition to the trusted Nordex lineup, the Nordex Pro is engineered for long-lasting performance. Its separate stone compartment protects the heating elements and extends the unit's lifespan, while a pull-out cassette tray ensures effortless maintenance.

Although available in one physical size, the model can be paired with up to two additional units for a maximum of 27,0kW in larger sauna rooms.

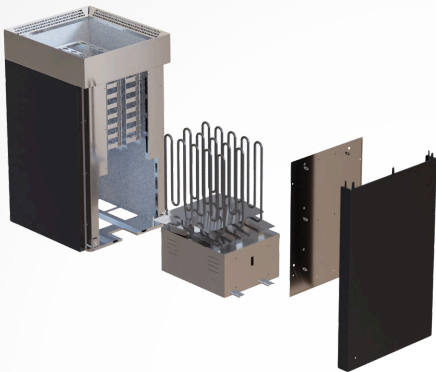


Nordex Pro
(NS)

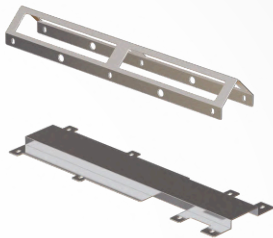
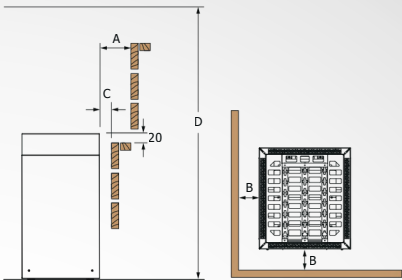


- » Power range: 6,0 – 9,0kW
- » Available controls: Saunova/Innova (NS)
- » Adjustable legs

Technical Data



The pull-out tray allows the user to easily change, service, or check the heating elements. This also makes replacing the heater stones easy, as they do not come into contact with the heating elements



Nordex Pro
Connection Kit

The Nordex Pro Connection Kit* is required in order to connect two or more Pros.

*sold separately

Saunova/Innova (NS)

| HEATER MODEL | kW | SAUNA ROOM | | SIZE OF HEATER | | | STONES (kg) | CONTROL | MINIMUM SAFETY DISTANCES | | | |
|---------------------|-----|------------|-----|----------------|-------|--------|----------------|----------|--------------------------|----|---|------|
| | | MIN | MAX | LENGTH | WIDTH | HEIGHT | | | A | B | C | D |
| NRN-PRO-60NS-BL-Z-C | 6,0 | 5 | 9 | 410 | 370 | 705 | 60 | separate | 50 | 50 | 5 | 1900 |
| NRN-PRO-80NS-BL-Z-C | 8,0 | 8 | 14 | 410 | 370 | 705 | 60 | separate | 80 | 80 | 5 | 1900 |
| NRN-PRO-90NS-BL-Z-C | 9,0 | 8 | 14 | 410 | 370 | 705 | 60 | separate | 80 | 80 | 5 | 1900 |



Nordex Pro Combi

Building on the Nordex tradition, the **Nordex Pro Combi** introduces an enhanced design that combines efficient heating with the added comfort of steam. An integrated water tank delivers gentle humidity, while the separated stone and element design enhances durability.

The Nordex Pro Combi's pull-out cassette tray simplifies maintenance, and the model can be paired with up to two additional units for a maximum of 27,0kW + 6,0kW in larger sauna rooms.

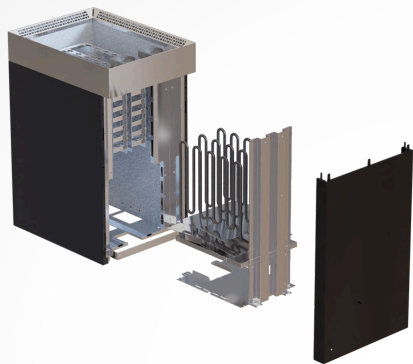


Nordex Pro Combi
(NS)

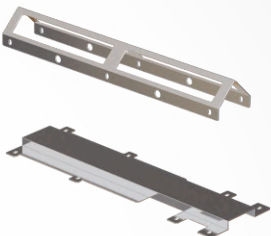
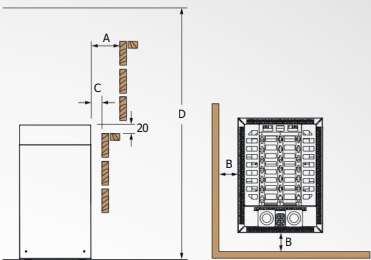


- » Power range: 6,0 – 9,0kW
- » Available controls: Saunova/Innova (NS)
- » Built-in aroma cups
- » Adjustable legs
- » Separate water tank with 0,8kW steam generator

Technical Data



The pull-out tray allows the user to easily change, service, or check the heating elements. This also makes replacing the heater stones easy, as they do not come into contact with the heating elements



Nordex Pro Combi
Connection Kit

The Nordex Pro Combi Connection Kit* is required in order to connect two or more Pros.

*sold separately

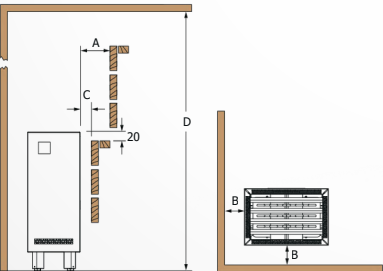
Saunova/Innova (NS)

| HEATER MODEL | kW HEATER | kW TANK | SAUNA ROOM | | SIZE OF HEATER | | | STONES (kg) | CONTROL | MINIMUM SAFETY DISTANCES | | | |
|----------------------|--------------|------------|-------------|-----|----------------|------------|--------|----------------|----------|--------------------------|----|---|------|
| | | | MIN (m³) | MAX | LENGTH | WIDTH (mm) | HEIGHT | | | A | B | C | D |
| NRNC-PRO-60NS-BL-Z-C | 6,0 | 1 x 0,8 | 5 | 9 | 500 | 370 | 705 | 60 | separate | 5 | 50 | 5 | 1900 |
| NRNC-PRO-80NS-BL-Z-C | 8,0 | 1 x 2,0 | 8 | 14 | 500 | 370 | 705 | 60 | separate | 5 | 80 | 5 | 1900 |
| NRNC-PRO-90NS-BL-Z-C | 9,0 | 1 x 2,0 | 8 | 14 | 500 | 370 | 705 | 60 | separate | 5 | 80 | 5 | 1900 |



Nordex S

Nordex S is an updated version of Nordex Floor with slimmer design to allow for easier heater placement for different layouts.



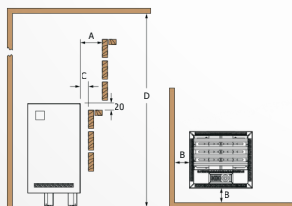
- » Power range: 6,0 – 9,0kW
- » Available controls: Saunova/Innova (NS)
- » Adjustable legs

| HEATER MODEL | kW | SAUNA ROOM | | SIZE OF HEATER | | | STONES (kg) | CONTROL | MINIMUM SAFETY DISTANCES | | | |
|--------------|-----|------------|-----|----------------|-------|--------|-------------|----------|--------------------------|----|---|------|
| | | MIN | MAX | LENGHT | WIDTH | HEIGHT | | | A | B | C | D |
| NRNS-60NS | 6,0 | 5 | 9 | 270 | 395 | 710 | 18 - 25 | separate | 50 | 50 | 5 | 1900 |
| NRNS-60NS-BL | 6,0 | 5 | 9 | 270 | 395 | 710 | 18 - 25 | separate | 50 | 50 | 5 | 1900 |
| NRNS-80NS | 8,0 | 7 | 13 | 270 | 395 | 710 | 18 - 25 | separate | 80 | 80 | 5 | 1900 |
| NRNS-80NS-BL | 8,0 | 7 | 13 | 270 | 395 | 710 | 18 - 25 | separate | 80 | 80 | 5 | 1900 |
| NRNS-90NS | 9,0 | 8 | 14 | 270 | 395 | 710 | 18 - 25 | separate | 80 | 80 | 5 | 1900 |
| NRNS-90NS-BL | 9,0 | 8 | 14 | 270 | 395 | 710 | 18 - 25 | separate | 80 | 80 | 5 | 1900 |



Nordex S Combi

The **Nordex S Combi** is now available in a steamier version. Balance the intense heat with an additional water tank for more steam. Also available with a black metal casing.



- » Power range: 6,0 – 9,0kW
- » Available controls: Saunova/Innova (NS)
- » Separate water tank with 0,8kW or 2,0kW steam generator
- » Built-in aroma cups
- » Adjustable legs



| HEATER MODEL | kW | SAUNA ROOM | | SIZE OF HEATER | | | STONES (KG) | CONTROL | MINIMUM SAFETY DISTANCES | | | |
|-----------------|-----|------------|-----|----------------|------------|--------|----------------|----------|--------------------------|----|---|------|
| | | MIN | MAX | LENGTH | WIDTH (mm) | HEIGHT | | | A | B | C | D |
| NRNSC-60NS | 6,0 | 5 | 9 | 360 | 395 | 710 | 8 | separate | 5 | 50 | 5 | 1990 |
| NRNSC-60NS-BL | 6,0 | 5 | 9 | 360 | 395 | 710 | 8 | separate | 5 | 50 | 5 | 1990 |
| NRNSC-80NS | 8,0 | 7 | 13 | 360 | 395 | 710 | 8 | separate | 5 | 80 | 5 | 1990 |
| NRNSC-80NS-BL | 8,0 | 7 | 13 | 360 | 395 | 710 | 8 | separate | 5 | 80 | 5 | 1990 |
| NRNSC-90NS | 9,0 | 8 | 14 | 360 | 395 | 710 | 8 | separate | 5 | 80 | 5 | 1990 |
| NRNSC-90NS-BL | 9,0 | 8 | 14 | 360 | 395 | 710 | 8 | separate | 5 | 80 | 5 | 1990 |



Nordex Floor

Nordex floor is a floor-mounted heater with straightforward design and quality performance. It is available with stainless steel or black metal casing.

- » Power range: 9,0 – 24,0kW
- » Available controls: Saunova/Innova (NS)
- » Adjustable legs



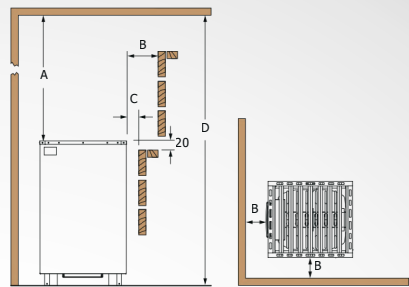
Nordex Floor
(NS)



Nordex Floor Black
(NS)



Technical Data



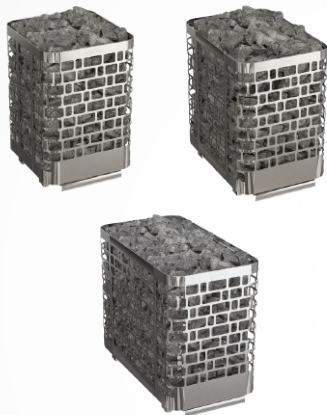
Saunova/Innova (NS)

| HEATER MODEL | kW | SAUNA ROOM | | SIZE OF HEATER | | | STONES (kg) | CONTROL | MINIMUM SAFETY DISTANCES | | | |
|----------------|------|------------|-----|----------------|-------|--------|-------------|----------|--------------------------|-----|-----|------|
| | | MIN | MAX | LENGTH | WIDTH | HEIGHT | | | A | B | C | D |
| NRFS-90NS | 9,0 | 8 | 14 | 450 | 400 | 670 | 50 | separate | 1200 | 120 | 50 | 1900 |
| NRFS-105NS | 10,5 | 9 | 15 | 450 | 400 | 670 | 50 | separate | 1200 | 120 | 60 | 1900 |
| NRFS-120NS | 12,0 | 10 | 18 | 450 | 400 | 670 | 50 | separate | 1400 | 130 | 70 | 2100 |
| NRFS-150NS | 15,0 | 13 | 23 | 595 | 400 | 670 | 75 | separate | 1400 | 160 | 100 | 2100 |
| NRFS-180NS | 18,0 | 17 | 29 | 595 | 400 | 670 | 75 | separate | 1400 | 160 | 100 | 2100 |
| NRFS-180NS-V12 | 18,0 | 18 | 30 | 740 | 400 | 670 | 100 | separate | 1400 | 160 | 100 | 2100 |
| NRFS-210NS-V12 | 21,0 | 22 | 35 | 740 | 400 | 670 | 100 | separate | 1400 | 160 | 100 | 2100 |
| NRFS-240NS-V12 | 24,0 | 26 | 42 | 740 | 400 | 670 | 100 | separate | 1400 | 160 | 100 | 2100 |

Krios Floor

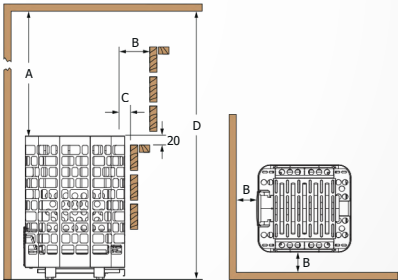
Our trusted **Krios** heater is now available also as a floor heater with the signature SAWO pattern. With more heater stones, the Krios Floor will produce more steam.

- » Power range: 9,0 – 24,0kW
- » Available controls: Saunova/Innova (NS)
- » Adjustable legs



Krios Floor
(NS)

Technical Data



| HEATER MODEL | kW | SAUNA ROOM | | SIZE OF HEATER | | | STONES (kg) | CONTROL | MINIMUM SAFETY DISTANCES | | | |
|-----------------|------|------------|-------------|----------------|---------------|--------|----------------|----------|--------------------------|-----|-----|------|
| | | MIN | MAX (m²) | LENGTH | WIDTH (mm) | HEIGHT | | | A | B | C | D |
| KRFS-90NS | 9,0 | 8 | 14 | 500 | 460 | 715 | 160 | separate | 1200 | 100 | 20 | 1900 |
| KRFS-105NS | 10,5 | 9 | 15 | 500 | 460 | 715 | 160 | separate | 1200 | 100 | 20 | 1900 |
| KRFS-120NS | 12,0 | 10 | 18 | 500 | 460 | 715 | 160 | separate | 1400 | 100 | 20 | 2100 |
| KRFS-150NS | 15,0 | 13 | 23 | 680 | 460 | 715 | 210 | separate | 1400 | 100 | 160 | 2100 |
| KRFS-180NS | 18,0 | 17 | 29 | 680 | 460 | 715 | 210 | separate | 1400 | 100 | 160 | 2100 |
| KRFS-180NS-V12 | 18,0 | 18 | 30 | 860 | 460 | 715 | 260 | separate | 1400 | 160 | 100 | 2100 |
| KRFS-210NS-V12 | 21,0 | 22 | 35 | 860 | 460 | 715 | 260 | separate | 1400 | 160 | 100 | 2100 |
| KRFS-240NS-V12 | 24,0 | 26 | 42 | 860 | 460 | 715 | 260 | separate | 1400 | 160 | 100 | 2100 |



Helius

Helius with its slim shape gives the user increased flexibility in terms of heater placement. This "hidden" heater can be installed behind the benches using a wall divider, which effectively renders the heater invisible to the user. Once water is poured to the water basin that remains visible, the water is then transported into the heater via a hose, heating up the room. The model also requires a much shorter than usual safety distance (min. 5mm), by adding a separate Helius hood, the safety distance can be made almost minimal.

With its advanced airflow design, the Helius uses fewer stones, which leads more airflow and better heating efficiency.



Helius
(NS)

- » Power range: 4,5 – 9,0kW
- » Available controls: Saunova/Innova (NS)
- » Separate soapstone water basin with hose
- » Optional heater guard and hood

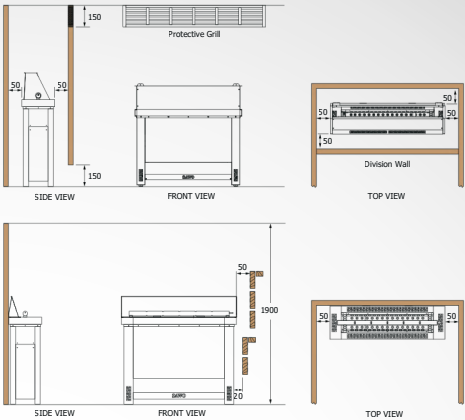
Technical Data

Saunova/Innova (NS)

| HEATER MODEL | KW | SAUNA ROOM | | SIZE OF HEATER | | | STONES (KG) | CONTROL |
|--------------|-----|------------|----|----------------|------------|-------------|-------------|----------|
| | | MM | MM | LENGTH (mm) | WIDTH (mm) | HEIGHT (mm) | | |
| HES-45NS | 4,5 | 3 | 6 | 230 | 860 | 655 | 17 | separate |
| HES-60NS | 6,0 | 5 | 9 | 230 | 860 | 655 | 17 | separate |
| HES-75NS | 7,5 | 7 | 13 | 230 | 860 | 655 | 17 | separate |
| HES-90NS | 9,0 | 8 | 14 | 230 | 860 | 655 | 17 | separate |

Other features:

- » Can be installed as floorstanding or wall-mounted
- » Heater stones are not in contact with the heating elements
- » Water accessory (funnel, hose) included for wall installation with a divider
- » Can fit 17kg of stones
- » Catch pan included
- » Adjustable legs



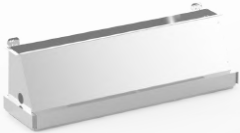
Helius with Hood (Optional)

- » Maintain a small space for a wall divider and recess area in order to place the heater behind or below the benches.



Heater Accessories (Optional)

Helius Hood



Helius
Stainless Steel

| MODEL | SIZE OF HOOD |
|----------|--------------------------|
| | LENGTH WIDTH HEIGHT (mm) |
| HP68-008 | 85 840 290 |

Helius Heater Guards



Wooden
Cedar (D) and Aspen (A)

| MODEL HES- | SIZE OF GUARD RAIL |
|---------------|--------------------------|
| | LENGTH WIDTH HEIGHT (mm) |
| GUARD-W-D | 280 910 90 |
| HES-GUARD-W-A | 280 910 90 |



Taurus D

Taurus D revolutionizes the standard sauna heater by having two or more power options in the same heater. The heater is designed for industrial use, spas, and both public and private pools.

The Taurus D features an advanced sensory system that detects heating element malfunctions early. The stone container keeps the sauna stones apart from the heating elements, increasing the lifespan of the elements. Also, the heater features a cassette pull-out tray that makes any maintenance function simple, whether replacing the stones or the elements. This design reduces downtime and operational costs while ensuring long-term performance.



Taurus D
(NS)

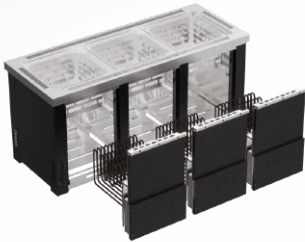
- » Power range: 9,0 – 36,0kW
- » Available controls: Saunova/Innova (NS)
- » Adjustable legs
- » Optional heater guard



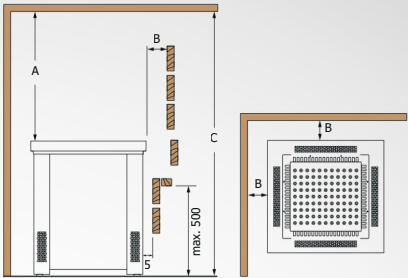
Technical Data



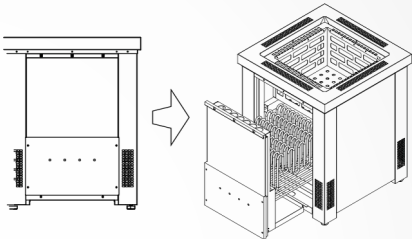
Taurus D
(NS)



TRD-270/300/330/360NS-G-P



The pull-out tray allows the user to easily change, service, or check the heating elements. This also makes replacing the heater stones easy, as they do not come into contact with the heating elements.



Saunova/Innova (NS)

| HEATER MODEL | KW | SAUNA ROOM | | SIZE OF HEATER | | | STONES (kg) | CONTROL | MINIMUM SAFETY DISTANCES | | |
|---------------------------|---------------------------|------------|-----|----------------|-------|--------|-------------|----------|--------------------------|-------|------|
| | | MIN | MAX | LENGTH | WIDTH | HEIGHT | | | A | B | C |
| TRD-90/120NS-G-P | 9,0 12,0 | 8 | 14 | 555 | 555 | 690 | 50 | separate | 1210 | 5/*50 | 1900 |
| TRD-150/180NS-G-P | 15,0 18,0 | 13 | 29 | 555 | 705 | 690 | 65-75 | separate | 1410 | 5/*50 | 2100 |
| TRD-180/210/240NS-G-P | 18,0 21,0 24,0 | 18 | 42 | 555 | 970 | 690 | 90-100 | separate | 1410 | 5/*50 | 2100 |
| TRD-270/300/330/360NS-G-P | 27,0 30,0 33,0 36,0 | 32 | 75 | 555 | 1385 | 690 | 150 | separate | 1410 | 5/*50 | 2100 |

*For commercial use

Heater Accessories (Optional)

Taurus Heater Guards



Wooden

Cedar (D), Aspen (A), and Black (BL)

| MODEL | SIZE OF GUARD RAIL | | |
|-------------------------|--------------------|-------|--------|
| | LENGTH | WIDTH | HEIGHT |
| TAU-GUARD-W9-D A BL | 555 | 102 | 135 |

| MODEL | SIZE OF GUARD RAIL | | |
|--------------------------|--------------------|-------|--------|
| | LENGTH | WIDTH | HEIGHT |
| TAU-GUARD-V12-D A BL | 105 | 705 | 135 |

Heater Guard Rails





Taurus D Combi

Thanks to the **Taurus D Combi**, the wellness experience is now even easier to personalize. The heater combines a steamer with the Taurus D innovation: two or more heating elements options.

With the Taurus D Combi, bathers can enjoy a traditional or a steam sauna experience. It comes with a scent basin, so the user can rejuvenate in therapeutic steam infused with their favorite essential oils and fragrances.

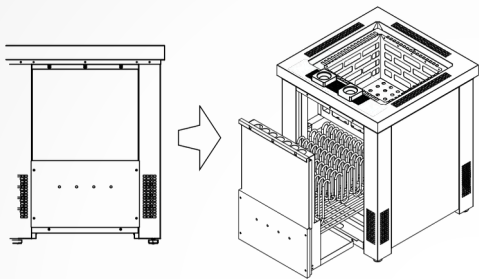
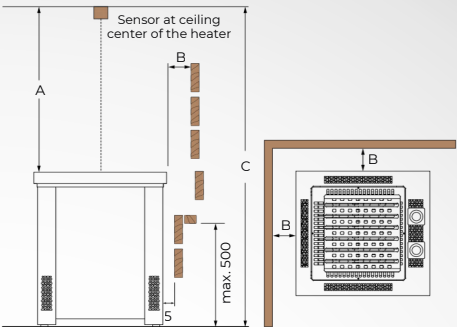
Using the heater is as hassle-free as it gets. It features a water level detection system that signals when the water level is low, similarly to other Combi heaters. The heater's auto-refill feature can also be activated for maximum convenience.



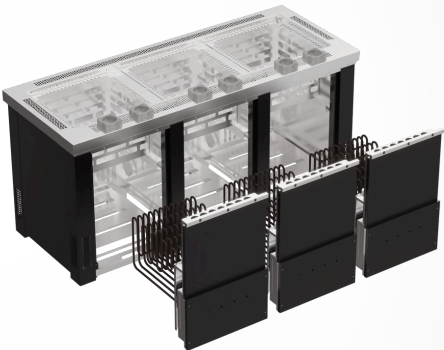
Taurus D Combi
(NS)



Technical Data



The pull-out tray allows the user to easily change, service, or check the heating elements. This also makes replacing the heater stones easy, as they do not come into contact with the heating elements.



TRD-270/300/330/360NS-G-P

Saunova/Innova (NS)

| HEATER MODEL | kW HEATER | kW TANK | SAUNA ROOM | | SIZE OF HEATER | | | STONES (KG) | CONTROL | MINIMUM SAFETY DISTANCES | | |
|----------------------------|---------------------------|------------|------------|-----|----------------|-------|--------|----------------|----------|--------------------------|-------|------|
| | | | MIN | MAX | LENGTH | WIDTH | HEIGHT | | | A | B | C |
| TRDC-90/120NS-G-P | 9,0 12,0 | 1 X 2,0 | 8 | 18 | 555 | 555 | 690 | 50 | separate | 1210 | 5/*50 | 1900 |
| TRDC-150/180NS-G-P | 15,0 18,0 | 1 X 2,0 | 13 | 29 | 555 | 705 | 690 | 65-75 | separate | 1410 | 5/*50 | 2100 |
| TRDC-180/210/240NS-G-P | 18,0 21,0 24,0 | 2 X 2,0 | 18 | 42 | 555 | 970 | 690 | 90-100 | separate | 1410 | 5/*50 | 2100 |
| TRDC-270/300/330/360NS-G-P | 27,0 30,0 33,0 36,0 | 3 X 2,0 | 32 | 75 | 555 | 1385 | 690 | 150 | separate | 1410 | 5/*50 | 2100 |

*For commercial use

Savonia

Savonia models are designed to withstand extreme heat with the least amount of time spent on overall care and maintenance. They can also handle a large amount of stones for a smoother, lower temperature sauna experience.

The heaters come in two versions, regular and cool-to-touch fibercoated. Both versions have adjustable legs that keep the heater level on the floor.



Savonia
Fibercoated
(NS)

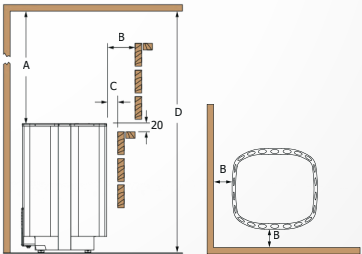


- » Power range: 9,0 – 24,0kW
- » Available controls: Saunova/Innova (NS)
- » Adjustable legs



Savonia
(NS)

Technical Data



| HEATER MODEL | KW | SAUNA ROOM | | SIZE OF HEATER | | | STONES (kg) | CONTROL | MINIMUM SAFETY DISTANCES | | | |
|-------------------------------------|------|------------|-------------|----------------|---------------|--------|----------------|----------|--------------------------|-----|-----|------|
| | | MIN | MAX (m³) | LENGTH | WIDTH (mm) | HEIGHT | | | A | B | C | D |
| SAV-90NS-Z SAV-90NS-Z-F | 9,0 | 8 | 14 | 440 | 420 | 655 | 50 | separate | 1200 | 110 | 50 | 1900 |
| SAV-105NS-Z SAV-105NS-Z-F | 10,5 | 9 | 15 | 440 | 420 | 655 | 50 | separate | 1200 | 120 | 60 | 1900 |
| SAV-120NS-Z SAV-120NS-Z-F | 12,0 | 10 | 18 | 440 | 420 | 655 | 50 | separate | 1400 | 130 | 70 | 2100 |
| SAV-150NS-Z SAV-150NS-Z-F | 15,0 | 13 | 23 | 590 | 420 | 655 | 75 | separate | 1400 | 160 | 100 | 2100 |
| SAV-180NS-Z SAV-180NS-Z-F | 18,0 | 17 | 29 | 590 | 420 | 655 | 75 | separate | 1400 | 160 | 100 | 2100 |
| SAV-180NS-V12-Z SAV-180NS-V12-Z-F | 18,0 | 18 | 30 | 740 | 420 | 655 | 100 | separate | 1400 | 160 | 100 | 2100 |
| SAV-210NS-V12-Z SAV-210NS-V12-Z-F | 21,0 | 22 | 35 | 740 | 420 | 655 | 100 | separate | 1400 | 160 | 100 | 2100 |
| SAV-240NS-V12-Z SAV-240NS-V12-Z-F | 24,0 | 26 | 42 | 740 | 420 | 655 | 100 | separate | 1400 | 160 | 100 | 2100 |

Savonia Combi

Savonia Combi offers the best of both worlds: the heat of a Savonia and a water tank for more steam and humidity. It is available with cool-to-touch fiber coating and an auto-refill function for the water tank.

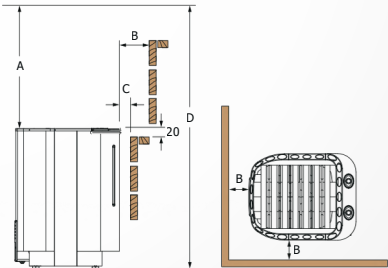
- » Power range: 9,0 – 18,0kW
- » Available controls: Saunova/Innova (NS)
- » Built-in aroma cups
- » Separate water tank with 1,0kW or 2,0kW steam generator
- » Adjustable legs
- » Optional: auto-refill feature for automatically refilling the water tank



Savonia Combi
Fibercoated
(NS)



Technical Data



| HEATER MODEL | kW HEATER | kW TANK | SAUNA ROOM | | SIZE OF HEATER | | | STONES (kg) | CONTROL | MINIMUM SAFETY DISTANCES | | | |
|-----------------------------|--------------|------------|------------|-----|----------------|-------|--------|----------------|----------|--------------------------|-----|-----|------|
| | | | MIN | MAX | LENGTH | WIDTH | HEIGHT | | | A | B | C | D |
| SAVC-90NS SAVC-90NS-Z-F | 9,0 | 1 x 2,0 | 8 | 14 | 510 | 420 | 655 | 40-50 | separate | 1200 | 110 | 50 | 1900 |
| SAVC-105NS SAVC-105NS-Z-F | 10,5 | 1 x 2,0 | 9 | 15 | 510 | 420 | 655 | 40-50 | separate | 1200 | 120 | 60 | 1900 |
| SAVC-120NS SAVC-120NS-Z-F | 12,0 | 1 x 2,0 | 10 | 18 | 510 | 420 | 655 | 40-50 | separate | 1400 | 130 | 70 | 2100 |
| SAVC-150NS SAVC-120NS-Z-F | 15,0 | 2 x 2,0 | 13 | 23 | 715 | 420 | 655 | 60-75 | separate | 1400 | 160 | 100 | 2100 |
| SAVC-180NS SAVC-120NS-Z-F | 18,0 | 2 x 2,0 | 17 | 29 | 715 | 420 | 655 | 60-75 | separate | 1400 | 160 | 100 | 2100 |



SAuna WORLD



sawo.com



SAWO Sauna



Sawo Inc.