



# SAUNA CONTROLS

For Finnish Sauna and Spa



# FINNISH SAUNA

## SAWO CONTROLLING OPTIONS

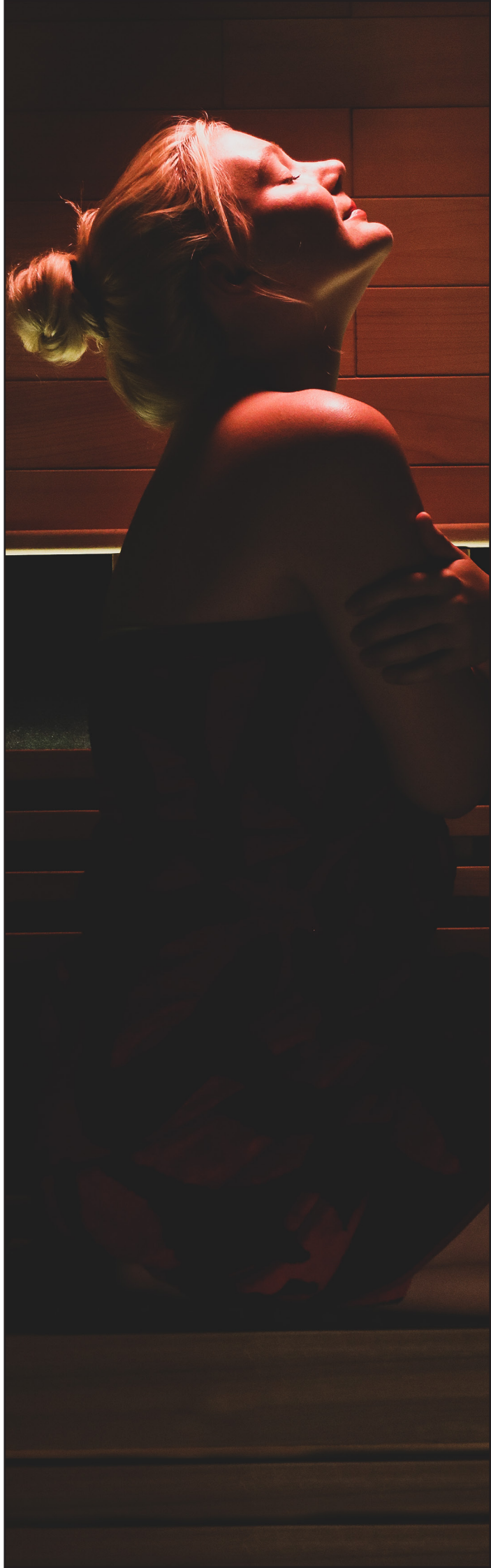
In the most traditional form of Finnish sauna, the temperature is controlled by adding wood to the woodburning heater. The longer you will maintain the fire, the hotter the air in the sauna will be. As wood-heated saunas are in many Finnish people's opinion the best type of sauna, many don't have the luxury to place a wood-heated sauna at home. Saunas with electric heaters have become the most common type of sauna in Finland -the land of over 3 million saunas. Electric heaters have fast heating-up times and offer versatile ways to personalize your sauna moment to be just perfect. Depending on the sauna bather, whether the sauna is a commercial or home sauna and the required heater power, from SAWO controls, you can find the right one for your needs.

We offer 3 different control options for SAWO electric heaters.

- **NS** =Separate Control Unit
- **Ni and Ni2** =Separate Control with Built-in Power Controller
- **NB** = Built-in Control

## WHICH HEATER CONTROLLING OPTION TO CHOOSE?

All SAWO separate controls have Smart Controlling-feature that helps in saving energy by automatically hibernating some or all heating elements when set temperature is reached. Once the temperature starts dropping, it will wake up the necessary heating elements to keep the temperature steady. This also helps to extend a heating element's lifespan. The sauna temperature is measured with a separate sensor placed inside the sauna. Not only will a separate sensor ensure the temperature is always accurate; it will make the heater more energy-efficient.



## NS-HEATERS



Separate Control Unit  
(NS)

Heaters with separate controlling require user interface and power controller to control essential features such as sauna lights, temperature, and session time. Depending on the interface, you can have additional features such as controlling sauna ventilation, light brightness, setting a weekly timer, and monitoring power consumption. Versatile control options allow setting sauna session to be anything from traditional Finnish sauna -hot and dry, to wood-heated sauna's mild and humid atmosphere. With pre-set, the control will remember the settings afterwards, and will ensure the sauna is always to your preference.

The control set is installed outside the sauna that makes controlling convenient and has the ability to restrict kids or other unauthorized person from changing the settings. Separate control requires less space in the sauna, allowing heaters to be flexibly embedded into benches.

Heaters with separate controlling enable setting the maximum session time even up to 24 hours in commercial saunas. We have a large selection of different shape and size NS-heaters with power ranges from 2.3kW up to 24kW. This guarantees to find suitable heater for small (< 5m<sup>3</sup>), medium (6m<sup>3</sup>-14m<sup>3</sup>), large (15-24m<sup>3</sup>) or even to extra-large saunas (>25m<sup>3</sup>).



Separate Control with Built-in  
Power Controller  
(Ni2 & Ni)

## Ni2 AND Ni HEATERS

Heaters with Ni2- and Ni-controlling have the same convenient usability as in NS-heaters, but allow easier installation when the power controller is already built-in to the heater. Add only Saunova 2.0 for Ni2 and any Innova interface for Ni, to control essential features directly. This makes installing effortless and space-saving.

Ni2-heaters have available power ratings from 2.3-9kW, offering both wall-mounted and floor-type heaters. For more powerful heaters, you can choose Ni-controlling which has heater models from 10.5kW up to 24kW.



Built-in Control  
(NB)

## NB- HEATERS

These heaters have built-in control in the heater itself. Adjust easily temperature and session time from control knobs. The temperature sensor inside the heater, estimates the room's temperature from heater's temperature. This results sauna experience to be more traditional Finnish sauna with hot and dry heat.

The NB-heaters have a maximum session time of 1-4 hours. From the available power range 2.3-9kW, NB-heaters can be used in small and medium size saunas.



# INNOVA

Take your home or commercial spa to a completely new level with versatile Innova controls. Choose your favorite user interface to control directly Ni-heaters (10.5-24kW) or for all NS-heaters (2.3-15kW) combine user interface with Innova 2.0 Power Controller. Additional heater power (15-30kW) can be reached by connecting to Innova 2.0 Contactor Unit.

Innova controls allow adjusting the essentials- sauna lights, time and temperature. When connecting to a suitable Innova 2.0 Power Controller, you can also add Fan, Dimmer, and Combi-features. Fan- feature will make the sauna moment pleasant by controlling the inflow of fresh air to sauna, and after the session helping to remove moisture for faster room drying. Proper ventilation will keep the wooden surfaces in good condition, longer and avoid bad smells in the sauna. Dimmer-feature lets you set the perfect atmosphere with the right brightness level. Use the Combi-feature for SAWO Combi-heaters. This allows you to set how long the tank will produce steam, which can be anything from 30% to 100% of the sauna session time. Depending on what type of sauna experience you prefer.



INC-B-V2



INC-S-V2



INT-S-SST



INT-S

## INNOVA 2.0 BUILT-IN

### Combined User Interface and Power Controller

- » For all NS Heaters 2.3-15kW, connect with Innova 2.0 Contactor Unit for 15-28kW heaters.
- » Smart Controlling -feature
- » Optional Fan, Dimmer and Combi feature
- » Dimensions: (L) 32cm x (H) 27cm x (W) 8cm

## INNOVA 2.0 USER INTERFACE

- » Connect with INP-C to use with any NS-heater or use to directly control Ni-heaters
- » Smart Controlling- feature
- » Compatible with Door Sensor
- » Optional Fan, Dimmer and Combi-feature
- » Dimensions: (W): 10.4cm x (H): 14.7cm x (L): 7.5cm

## INNOVA STAINLESS TOUCH & INNOVA TOUCH

- » Connect with INP-C to use with any NS-heater or use to directly control Ni-heaters
- » Smart Controlling Feature
- » Compatible with Door Sensor
- » Optional easy mode
- » Power blackout memory
- » Optional Fan, Dimmer and Combi-feature
- » Dimensions: Innova Stainless Touch (D) 4.0 x (W) 14.7 x (H) 10.4cm/ Innova Touch (L) 18.0 x (W) 10.5 x (H) 3.1cm



INC-S

## INNOVA CLASSIC USER INTERFACE

- » Connect with INP-C to use with any NS-heater or use to directly control Ni-heaters
- » Smart Controlling- feature
- » Compatible with Door Sensor
- » Prerun timer
- » Optional Fan, Dimmer and Combi-feature
- » Dimensions: (L) 18.0 x (W) 10.5 x (H) 3.1cm



DRF-UI-1-S

## FIRECONTROL USER INTERFACE

- » Connect with Innova 2.0 power controller to use with any NS-heater until 15kW, or control directly Ni-heater.
- » Preset timer for weekly sessions
- » Power consumption counter
- » Optional fan, dimmer and Combi feature
- » Easy mode
- » Power Blackout memory
- » Dimensions: (L) 14.5cm x (H) 2.6cm x (W) 14.5cm



Contactor Unit  
INP-S-V2

Power Controller  
INP-C-V2

## INNOVA POWER CONTROLLER

- » New look, same features. Casing has more space for easier wiring and installation
- » Dimensions: (L) 32cm x (H) 27cm x (W) 8cm

## INNOVA CONTACTOR UNIT

Connect with Innova 2.0 Power Controller to control any NS heaters over 15kW

- » Dimensions: (L) 32cm x (H) 27cm x (W) 8cm





# SAUNOVA 2.0

Saunova 2.0 is the perfect control for small heaters up to 9kW. Whether you like a sauna with more steam or traditional hot and dry, Saunova 2.0 controls are suitable for both. Use it in the home or commercial sauna by saving your settings, such as time and temperature. Remote-control the heater easily by connecting Saunova 2.0 to existing household automation.



SAU-B-V2 /  
SAU-B-CF-V2

## SAUNOVA 2.0 BUILT-IN CONTROL

Combined User Interface and Power Controller

- » For all NS Heaters 2.3-9kW, for 9-18kW add Saunova 2.0 Contactor Unit
- » Smart Controlling -feature
- » Compatible with Door Sensor
- » Optional Fan and Combi -feature
- » Dimensions: (L) 32cm x (H=) 27cm x (W)8cm



SAU-UI-V2

## SAUNOVA 2.0 USER INTERFACE

Easy and stylish user interface

- » Direct control for Ni2 heaters, for NS heaters 2.3-9kW add Saunova 2.0 Power Controller
- » Smart Controlling -feature
- » Compatible with Door Sensor
- » Optional Fan and Combi -feature
- » Dimensions: (L) 32cm x (H=) 27cm x (W)8cm



Power Controller  
SAU-PC-V2/  
SAU-PC-CF-V2

## SAUNOVA 2.0 POWER CONTROLLER

Connect with Saunova 2.0 user interface to control any NS heater 2.3-9kW.

- » New look, same features. Casing has more space for easier wiring and installation
- » Dimensions: (L) 32cm x (H=) 27cm x (W)8cm

## SAUNOVA 2.0 CONTACTOR UNIT

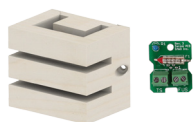
Connect with Saunova 2.0 Power Controller to control any NS heater 9-18kW.

Contactor Unit  
SAU-PS-V2



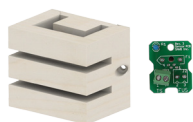
## OPTIONAL ITEMS:

### ADDITIONAL TEMPERATURE SENSORS



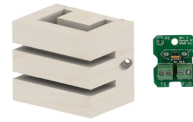
**INN-FTEMP**

- » Temperature sensor for measuring temperature levels during sauna session. Automatically recognized by the control when connected.



**INN-BTEMP**

- » Optional temperature sensor for bench area. Connect to control to save energy with faster heating-time.



**INN-HUM**

- » This optional temperature and humidity sensor helps save energy, have faster heating time and more accurate temperature and humidity levels during the sauna session.

### INTERFACE HOLDER



**INN-IH23**

- » Now suitable for all 2.0 and stainless steel Touch user interfaces
- » Available in Cedar, Aspen and Pine
- » Dimensions: (L) 14.5cm x (H) 4cm x (W)19cm



**INN-IH20**

- » For Innova Classic and Touch user interfaces
- » Available in Cedar, Aspen and Pine
- » Dimensions: (L) 14cm x (H) 2cm x (W)21.5cm



**INN-IH10**

- » For Innova Classic and Touch user interfaces
- » Available in Cedar, Aspen and Pine
- » Dimensions: (L) 14cm x (H) 2cm x (W)21.5cm



# INFRARED SAUNA

## CONTROLLING OPTIONS FOR INFRARED PANELS

SAWO Infrared products use far-infrared radiation (FIR) panels for heating. The sauna experience has a milder temperature of 40-60°C and dry heat, since no moisture is created. SAWO infrared panels have a cool-to-touch surface, which means you can safely and flexibly place the panels to fit in any sauna layout.

Control the panels easily with SAWO infrared controls. Adjust the Infrared sauna's temperature, session time, lights, and exhaust fan. The control can also be connected to a household automation system for remote-controlling.



## INFRARED 2.0 BUILT-IN CONTROLLER

### IR-B-V2

- » Placed outside the sauna room
- » Combined user interface and power controller
- » Adjust easily time, temperature, ventilation and brightness
- » Dimensions: (L) 32cm x (H) 27cm x (W) 8cm



## INFRARED 2.0 USER INTERFACE

### IR-UI-V2

- » Can be inside or outside the sauna room
- » Connect with Infrared 2.0 Power Controller
- » Adjust easily time, temperature, ventilation and brightness
- » Dimensions: (W) 10.4cm x (H) 14.7cm x (L): 7.5cm



## INFRARED 2.0 POWER CONTROLLER

### IR-PC-V2

- » Connect with Infrared 2.0 user interface to control SAWO infrared panels.
- » Dimensions: (L) 32cm x (H) 27cm x (W) 8cm



# STEAM SAUNA

## CONTROLLING OPTIONS FOR STEAM GENERATORS

SAWO steam controls let you enjoy a customized steam sauna effortlessly! Connect suitable control to STE or STN steam generator and adjust steam room lights, temperature and session time. With a pre-run timer, the settings will stay in control's memory, stored suitably for the next use.

Both STN & STE steam generators have energy-efficient Standby- and Heating Element Error-features controlled with steam controls. When the steam generator is on Standby mode, the water inside the tank is kept close to the boiling point without generating steam. Once you wish to use the generator again, it will produce steam quickly. The heating element error will notify for possible defects in heating elements, making it easy to maintain generator fast.

In STN steam generator, by adding Dimmer, Fan and Aroma Pump features, you can also change light brightness, control the fan for improved drying after session and add aroma therapy to steam sauna with Aroma Pump. The controls for STN have convenient Autodrain and Decalcifying- features, where water will be filled and drained automatically from the tank after use.



STE-IFACE-V2

## STE 2.0 CONTROL

- » Suitable for STE Steam Generator
- » Adjust time, lights and temperature
- » Standby Mode
- » Heating Element Reset for improved heating element performance
- » Remote-controlling feature
- » Compatible with Demand Button
- » Dimensions: (W) 10.4cm x (H) 14.7cm x (L) 7.5cm



STP-IFACE-V2

## STN 2.0 CONTROL

- » Adjust temperature, time and humidity.
- » Energy saving Standby Mode
- » Key Lock
- » Autodrain feature
- » Compatible with Demand Button
- » Optional features Aroma, Fan & Dimmer
- » Dimensions: (W) 10.4cm x (H) 14.7cm x (L) 7.5cm



STP-IFACE

## STN CLASSIC CONTROL

- » Adjust temperature, time and humidity.
- » Energy saving Standby Mode
- » Key Lock
- » Autodrain feature
- » Compatible with Demand Button
- » Optional features Aroma, Fan & Dimmer
- » Dimensions: (W): 8.4cm x (H) 16cm x (L) 3.1cm

## STEAM STAINLESS TOUCH CONTROL



STP-INFACE-SST

- » Suitable for STN Steam Generator
- » Pre-Set time and temperature
- » Counters for easier controlling of electricity consumption & preventive maintenance
- » Standby mode
- » Time & Date
- » Key lock
- » Optional Easy Mode
- » Optional features Aroma, Fan and Dimmer
- » Autodrain and Decalcifying -feature
- » Blackout memory, restores state before the power failure
- » Compatible with Demand Button
- » Remote-controlling feature
- » Programmable weekly timer with a max. of 3 programs per day
- » Dimensions: (W) 3.4cm x (H) 9.2cm x (L) 16.2cm



## OPTIONAL ITEMS:



STP-BTN-2.0

### DEMAND BUTTON

- » Pressing the demand button will immediately release extra steam for 30 seconds.



STP-PUMP

### AROMA PUMP

- » For STN Steam generator, will allow to use fragrant aromas in steam sauna.