

## C U B O S

In modern saunas, simplistic design paved importance on the visual and its practicality to fulfill the enjoyment of the bathers.

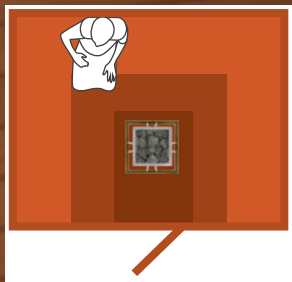
Cubos is 1 heater but has 3 main functions! When using the protective cover, Cubos can be placed also in the Wall and Corner of the sauna room!

The Cubos heater is a floor standing heater that carries adequate quantity of sauna stones. This heater is best suited for household sauna use.

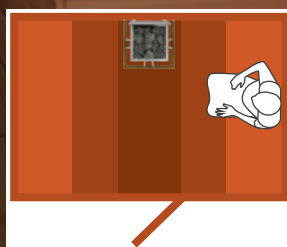


# CUBOS

## 3 in 1 heater



Middle Installation



Wall Installation  
with Protective Cover

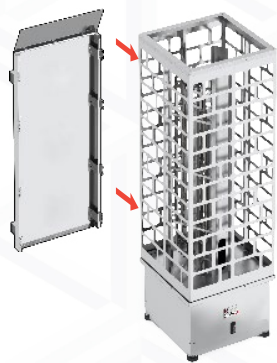
Cubos is a versatile heater that can be placed also in the corner and wall when using the **Cubos Protective Cover**. This simple idea sets an advantage of Cubos among other heaters.



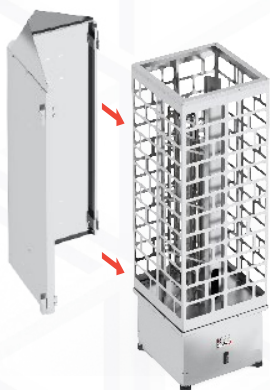
Corner Installation







Wall Installation  
with Protective Cover



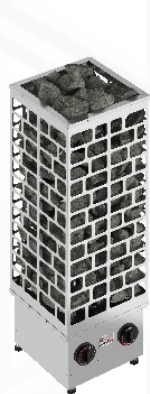
Corner Installation  
with Protective Cover



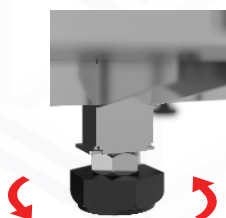
Saunova 2.0 Operated  
(Ni2)



Separate  
(NS)



Built-in Control  
(NB)



## CUBOS FEATURES

### Wall Installation

Using Protective Cover for wall, Cubos heater can be placed on the wall of the sauna room. This is best for narrow sauna room designs or wanting to generate a wider sauna space.

The set of the protective cover for wall includes a covering sheet and a reflector that wards heat to the bather.

### Corner Installation

A Protective Cover for corner installation is needed when opting to have the Cubos heater into the corner part of the sauna. The flexibility of heater positioning promote a wide option when designing a sauna room.

The protective cover for corner set includes two pieces of covering sheet, a connection rod and a reflector that wards heat to the bather.

### Saunova 2.0 Operated (Ni2), Separate (NS) and Built-in (NB) Controls

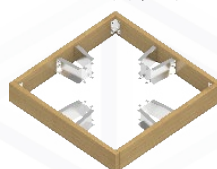
Cubos heater can be bought as ready-packed with Saunova 2.0 sauna control that can heat up the sauna room faster with its smart controlling feature and it is bagged with several intelligent sauna options. The Cubos heater can also be ordered as Separate or Built-in control.

### Heater Guard Rail and Collar

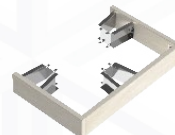
The Cubos heater can have a guard rail to protect from accidental contact with the heater. The collar also add elegance and cover the wood from heat.

#### Guard Rail

Cedar (D) | Aspen (A)



Middle



Wall



Corner

#### Collar

Stainless (ST) | Soapstone (S) | Wood (W)



Middle



Wall

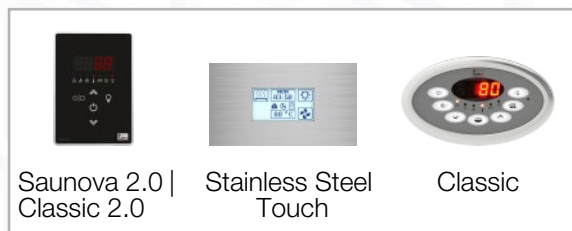


Corner

### With Adjustable Leg Support

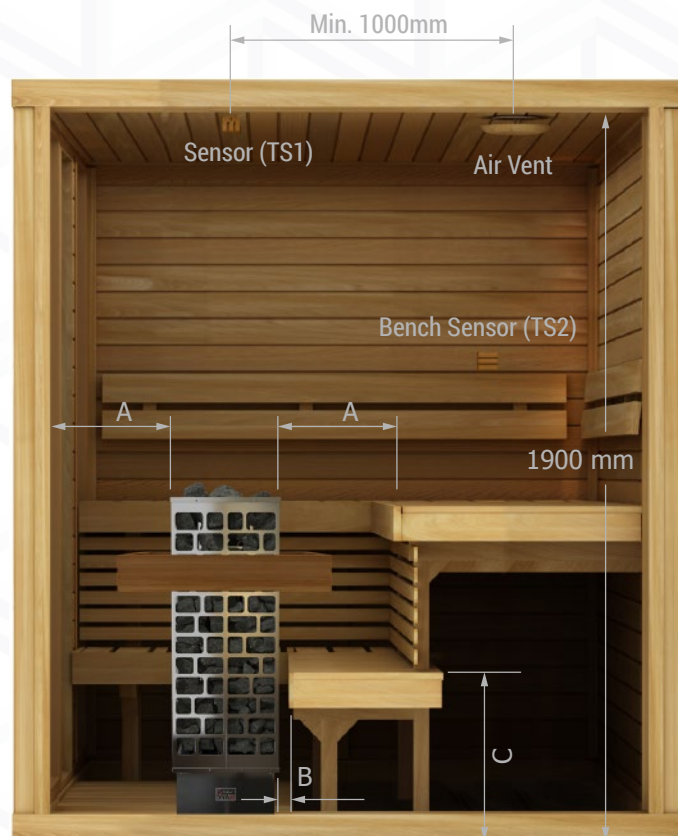
In cases if the sauna room floor is not even, the adjustable leg support can easily be twisted to level the heater.

## Controls



## Sensors

Normal control is using singular sensor that is usually installed above the heater. However, having an extra bench sensor will keep the sauna control reading more precise. This will allow fast sauna heating up time as it computed the average room temperature in between the room.



## Top View



## Safety Distance (mm)

HEATER MODEL	A (MIN.)	B (MIN.)	C (MAX.)
CUB3-45 Ni2   NS   NB	100	20	500
CUB3-60 Ni2   NS   NB	100	20	500
CUB3-75 Ni2   NS   NB	100	20	500
CUB3-90 Ni2   NS   NB	125	20	500

## TECHNICAL DATA

HEATER MODEL	KW	SAUNA ROOM MIN (m³) MAX		SIZE OF THE HEATER (Installed) (mm)								STONES (kg)	CONTROL
				MIDDLE		WALL		CORNER		Height			
				Width	Depth	Width	Depth	Width	Depth				
CUB3-45 Ni2   NS   NB	4,5	3	6	290	290	290	340	340	340	930	75	Saunova 2.0   Separate   Built-in	
CUB3-60 Ni2   NS   NB	6,0	5	9	290	290	290	340	340	340	930	75	Saunova 2.0   Separate   Built-in	
CUB3-75 Ni2   NS   NB	7,5	7	13	290	290	290	340	340	340	930	75	Saunova 2.0   Separate   Built-in	
CUB3-90 Ni2   NS   NB	9,0	8	14	290	290	290	340	340	340	930	75	Saunova 2.0   Separate   Built-in	